

# Belle Rose

RENÉE NANNEMAN



100  
years



Old Rose Stars Quilt designed by: **Renée Nanneman** • Quilt Size: **72½" x 84"**

Skill Level: **Intermediate** • [andoverfabrics.com](http://andoverfabrics.com)

andover

•  
• [makower.uk](http://makower.uk)  
•

Free Pattern Download Available

1384 Broadway New York, NY 10018  
Tel. (800) 223-5678 • [andoverfabrics.com](http://andoverfabrics.com)

# Old Rose Stars Quilt

Introducing Andover Fabrics new collection:

**Belle Rose** by Renée Nanneman

Old Rose Stars Quilt designed by Renée Nanneman

Quilt finishes 72½" x 84"

50 Blocks: 6" x 6"

*Bold prints that hark back to the 1800s make this queen topper extra special. Prints with different sizes and styles of patterns keep the eye engaged in this "controlled scrappy" design. The diagonal set with sashes makes the quilt even more stunning.*

## Cutting Directions

**Note:** Read assembly directions before cutting patches.

All measurements are cut sizes and include ¼" seam allowances. A fat ⅛ is a 9" x 20"-22" cut of fabric. A fat ¼ is an 18" x 20"-22" cut. Sashes are cut extra long for ease of construction. WOF designates the width of fabric from selvedge to selvedge (approximately 42" wide).

**Yardage is sufficient to cut patches for the blocks if you wish to make more stars with black print backgrounds or black print centers. Read Step 1 before cutting.**

### Fabric A

Fussy-cut (2) top/bottom borders 6½" x 73", cut lengthwise

Fussy-cut (2) side borders 6½" x 72½", cut lengthwise

### Fabric B

Cut (7) strips 2½" x WOF, pieced to make the following:

(2) side borders 2½" x 68½"

(2) t/b borders 2½" x 61"

### Fabric C

Cut (7) squares 3½" for block centers

Cut background patches for 1 block (optional)

### Fabric D

Cut (43) squares 3½" for block centers

(Cut more or fewer as you wish.)

### Fabric E

Cut all sashes lengthwise

Cut (3) sashes 2½" x 75"      Cut (2) sashes 2½" x 27"

Cut (2) sashes 2½" x 59"      Cut (2) sashes 2½" x 11"

Cut (2) sashes 2½" x 43"      Cut (60) sashes 2½" x 6½"

### Fabric F

Cut (5) squares 9¾", cut in half diagonally twice to make

20 quarter-square triangles (2 will not be used)

Cut (2) squares 5¼", cut in half diagonally to make

4 half-square triangles for corners

Cut (2) squares 3¼", cut in half diagonally twice to make

(8) quarter-square triangles for each star you wish to make

## Fabric Requirements

		Yardage	Fabric	
<b>Fabric A</b>	border	2¼ yards	9716 L	
<b>Fabric B</b>	border	¾ yards	9717 K	
<b>Fabric C</b>	blocks	fat ⅛ yd	9718 K	
<b>Fabric D</b>	blocks	½ yard	9718 R	
<b>Fabric E</b>	sashes	2¼ yards	9723 L1	
<b>Fabric F</b>	set	1 yard	9726 R	
<b>10 Tan</b>	blocks	fat ¼ yd each		
9717 N	9719 N	9720 N	9721 N	9723 N
9724 L1	9726 N	9727 L	9727 N	9882 L1
<b>3 Red</b>	blocks	fat ¼ yd each		
9720 R	9722 R	9882 R		
<b>7 Black</b>	blocks	fat ⅛ yd each		
9719 K	9720 K	*9721 K	9723 K	9724 N
9726 K	9882 K			
<b>Binding</b>		¾ yard		*9721 K
<b>Backing</b>		5¼ yards		9722 N

**10 Tan** From each:

Cut patches for blocks as needed

See Cutting for ONE Block below.

**3 Red** From each:

Cut patches as needed (50 blocks total, minus what you make with Fabric F)

**7 Black** From each:

Cut patches for blocks as needed

See Cutting for ONE Block below.

### Binding

Cut (9) strips 2½" x WOF for binding

### Backing

Cut (2) panels 41" x 92", pieced to fit quilt top with overlap on all sides

### Cutting for ONE Block:

**Fabric C or D** (center square)

Cut (1) square 2½"

**Fabric 1** (tan or black to frame center square)

Cut (1) square 3¼", cut in half diagonally twice to make 4 quarter-square triangles

**Fabric 2** (red for star points)

Cut (2) squares 3¼", cut in half diagonally twice to make 8 quarter-square triangles

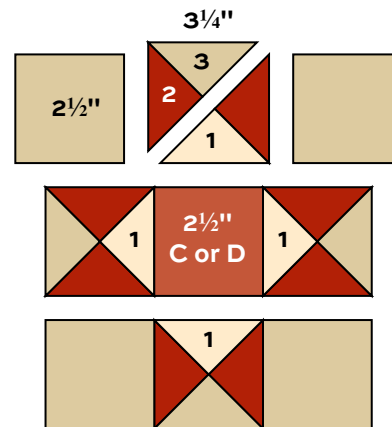
**Fabric 3** (tan or black for background)

Cut (4) squares 2½"

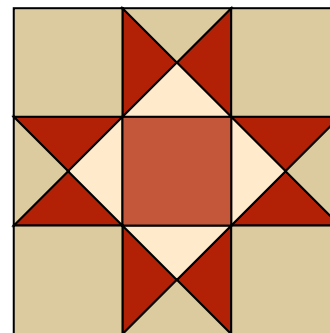
Cut (1) square 3¼", cut in half diagonally twice to make 4 quarter-square triangles

## Making the Quilt

1. Feel free to make more stars with black centers, or black or tan background patches. Change the combinations of prints as you desire. Plan the various stars before you begin cutting patches, or cut the patches for each block, determining combinations as you go. The fun part of making a scrappy quilt is to make each block different from any other. This is a “controlled scrappy” quilt because only 2 prints are used for the block centers, and all the star points are red.
2. Referring to the Block Piecing diagram, join Fabric 1, Fabric 2, and Fabric 3 triangles to make a pieced unit. Make 4 alike. Arrange the pieced units with the Fabric 3 squares in the corner, and a Fabric C or D square (or print of your choice) in the center. Sew the patches into rows, and then join the rows. Make a total of 50 star blocks.
3. Referring to the Quilt Diagram, use a large flat surface or design wall to arrange the blocks, 6½” Fabric E sashes, and appropriate Fabric F triangles in diagonal rows. Be certain that darker blocks are scattered across the quilt, and that the same background patches are not adjacent to one another.
4. Join the blocks, short sashes, and Fabric F triangles into rows.
5. To ensure that the blocks align from row to row, mark each Fabric E sash as follows: Fold each sash in half and press or mark the center. Using a pencil, mark 3” on each side of the center mark. Then mark 2”, 6”, 2”, 6” and so forth along both long edges of each strip. Fold a block row in half and mark the center along both edges. Pin the appropriate length sash to the block row with right sides together, matching the alignment marks on the sash with the seams in the block row. Stitch the sash to the block row. Continue pinning and stitching each block row between sashes. Note that the sashes stick out beyond the red triangles at the quilt’s edges.



**Block Piecing**

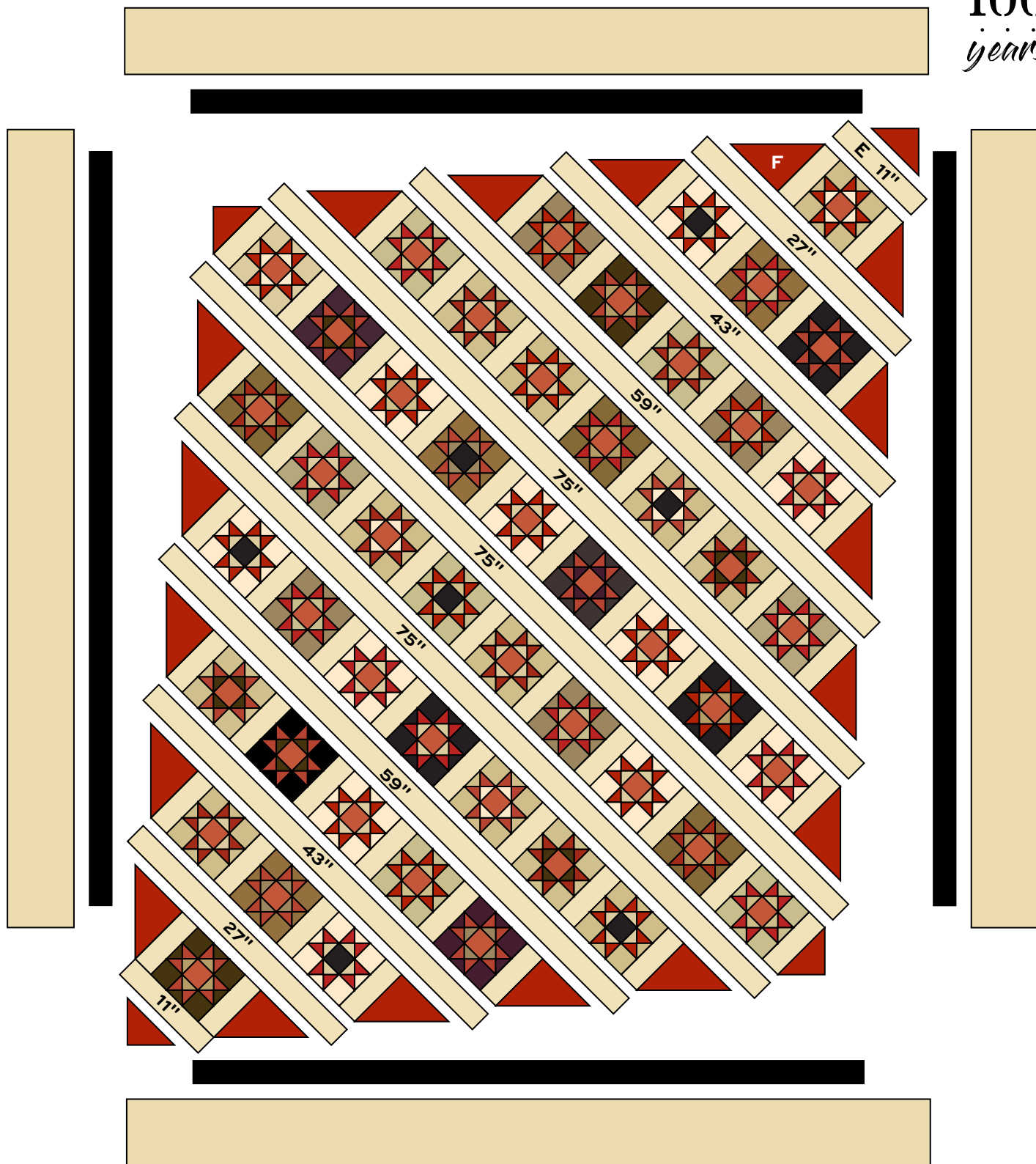


**Block – Make 50**

6. Trim the edges of the quilt all around, removing the ends of the sashes that stick out beyond the red triangles. Sew the remaining Fabric F corner triangles where needed. Place a large square acrylic ruler in the corners to be certain that they remain square as you trim the quilt.
7. Sew Fabric B borders to the quilt, and then join Fabric A borders to the quilt.

## Finishing the Quilt

8. Layer the quilt with batting and backing and baste. Quilt in the ditch around borders and block patches. Quilt around the printed motifs in the outer border. Quilt sashes and Fabric F triangles as you wish. Bind to finish the quilt.



Quilt Diagram

# Belle Rose

RENÉE NANNEMAN

**a**  
100  
years



9716 L\*



9716 R



9720 K\*



9720 N\*



9717 K\*



9717 N\*



9720 R\*



9718 K\*



9718 R\*



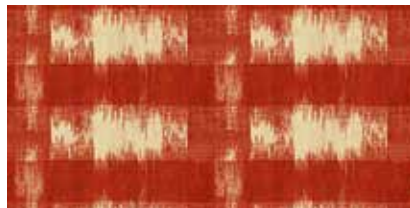
9721 K\*



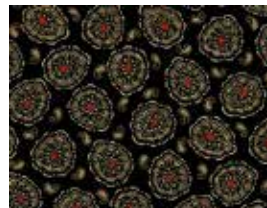
9721 N\*



9722 N\*



9722 R\*



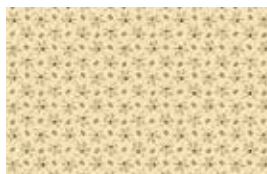
9719 K\*



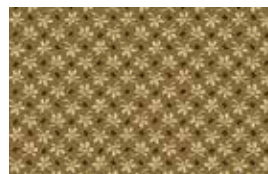
9719 N\*



9723 K\*



9723 L1\*



9723 N\*



9724 L1\*



9724 N\*



9726 K\*



9726 N\*



9726 R\*



9727 L\*



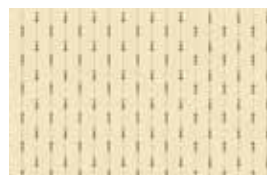
9727 N\*

\*Indicates fabrics used in quilt pattern.  
Fabrics shown are 25% of actual size.

Free Pattern Download Available



9882 K\*



9882 L1\*



9882 R\*

andover : [makower uk](http://makower.uk)

1384 Broadway New York, NY 10018  
Tel. (800) 223-5678 • [andoverfabrics.com](http://andoverfabrics.com)